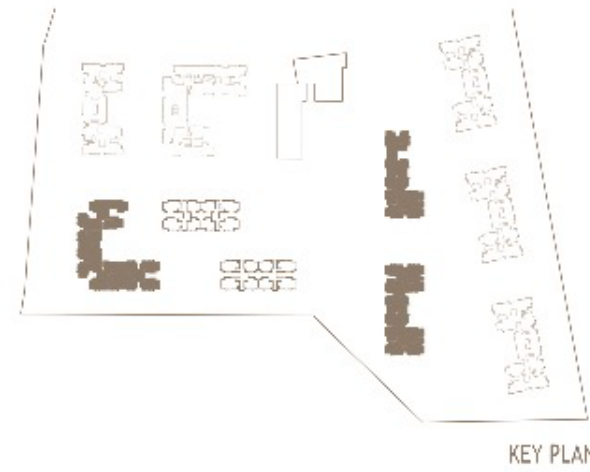
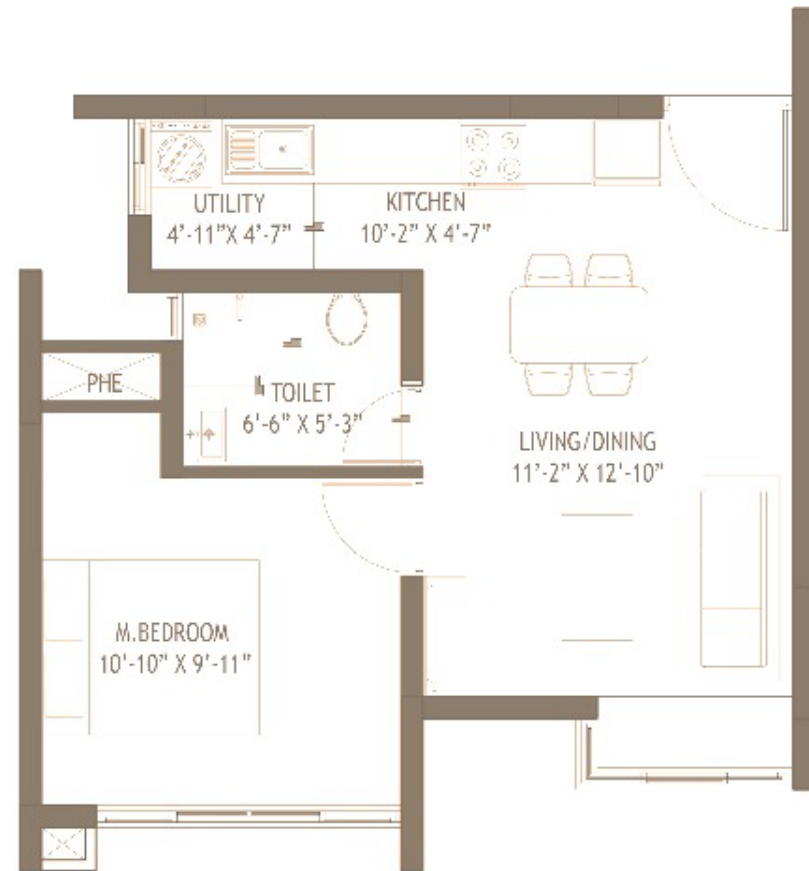


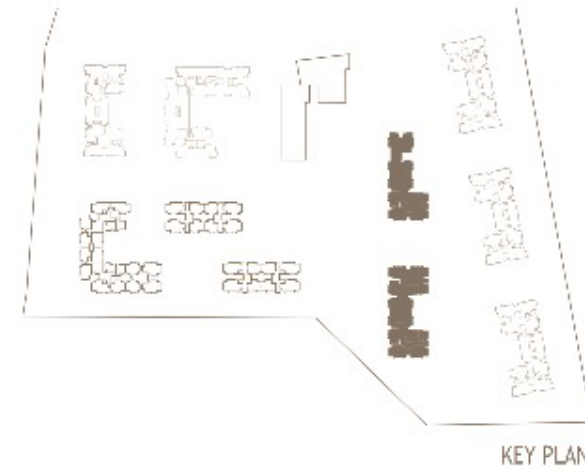
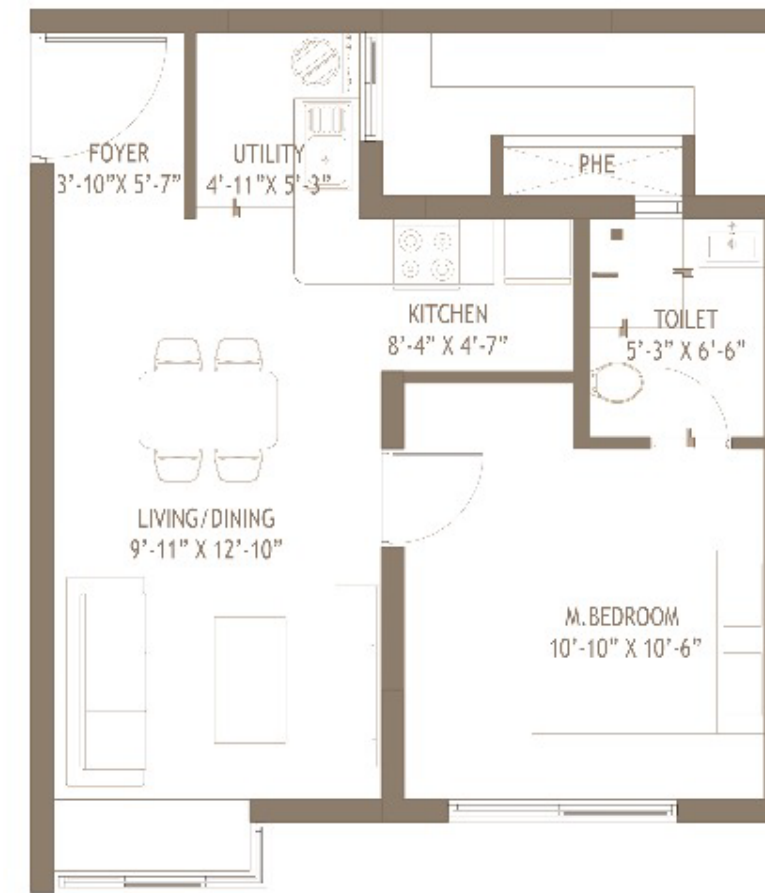


FLOOR PLANS

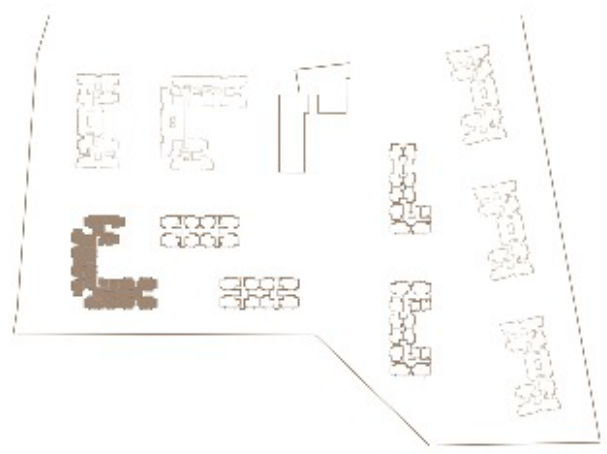
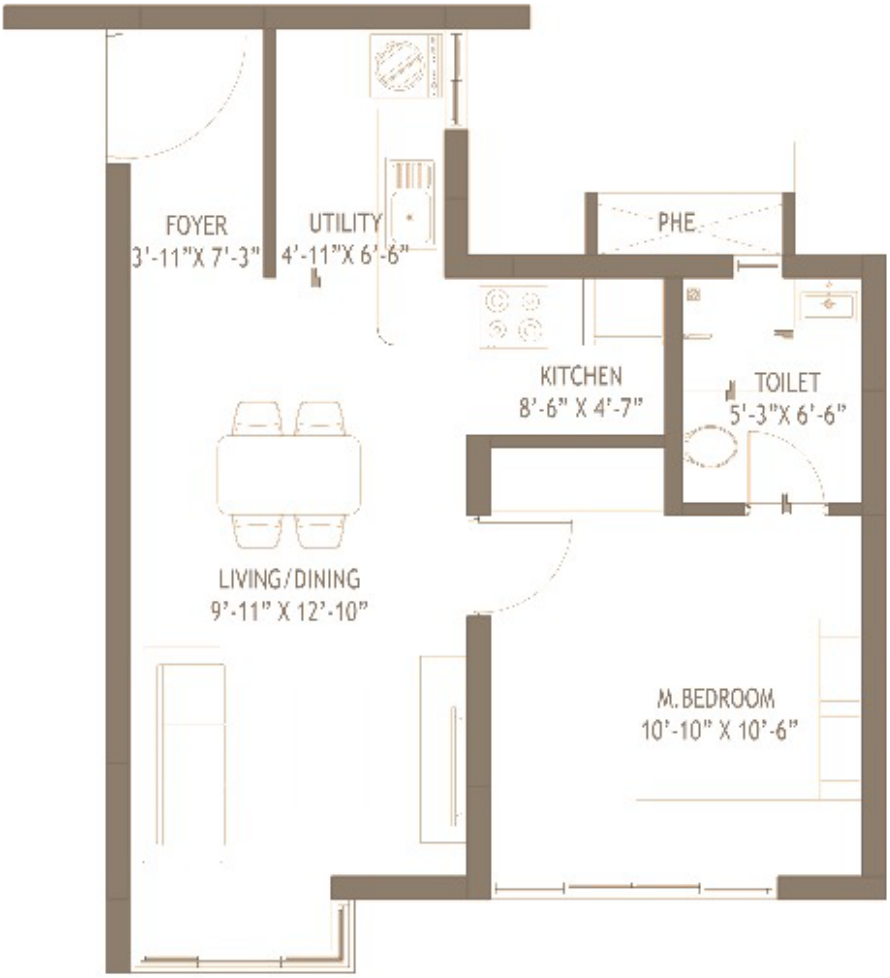




1BHK-A
RERA CARPET AREA - 411 SQFT
SALEABLE AREA - 608 SQ FT



1BHK-C
RERA CARPET AREA - 437 SQFT
SALEABLE AREA - 678 SQ FT

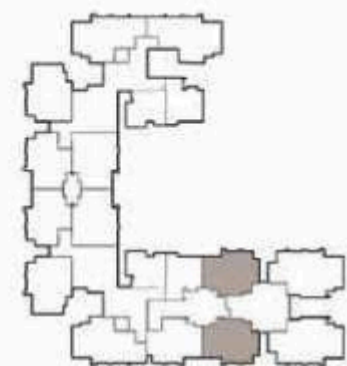
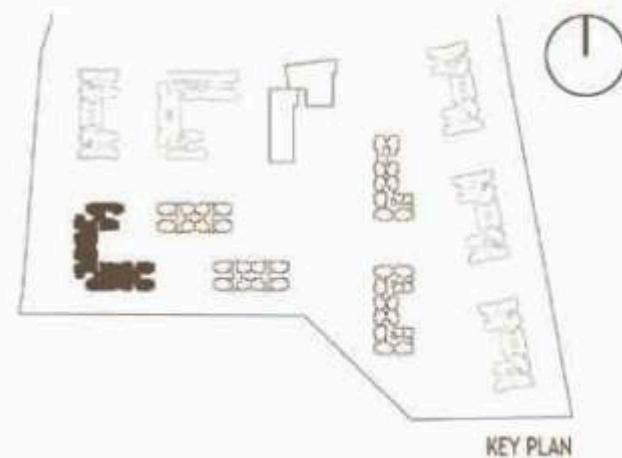


1BHK-B
RERA CARPET AREA - 452 SQFT
SALEABLE AREA - 697 SQ FT





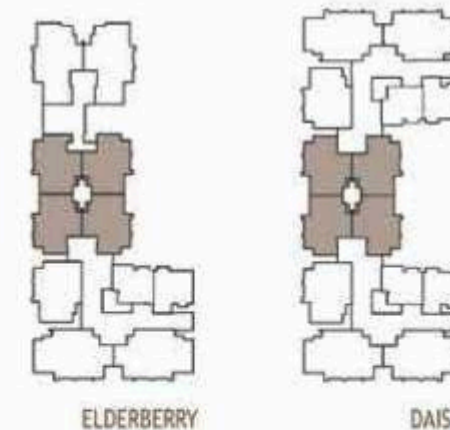
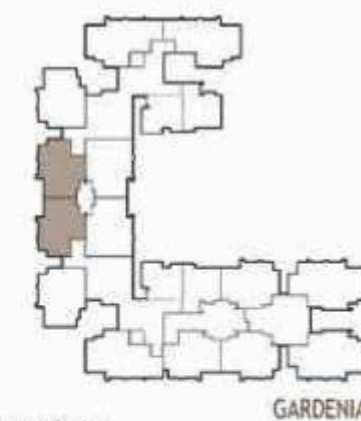
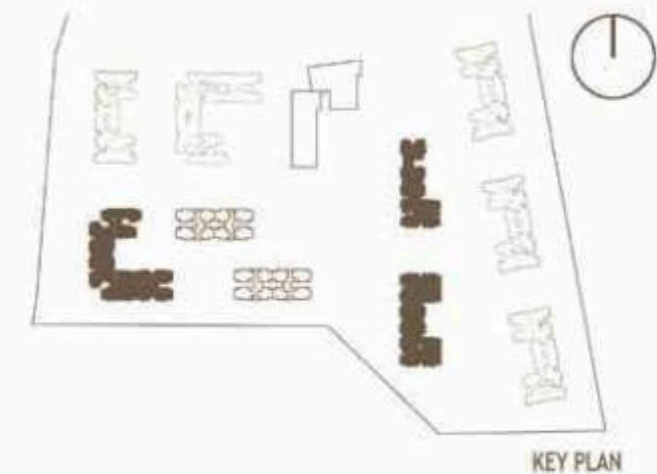
Gardenia C Block Unit 101 -1401 East facing
Gardenia C Block Unit 104 - 1404 East facing



GARDENIA
2BHK-C
RERA CARPET AREA - 672.2 SQFT
SALEABLE AREA - 1023.3 SQ FT



Gardenia A Block Unit 106 - 1406 East facing
Gardenia B Block Unit 101 - 1401 East facing
Elderberry A Block Unit 104 -1404 East facing
Elderberry A Block Unit 103 - 1203 West facing
Elderberry B Block Unit 101 - 1401 East facing
Elderberry B Block Unit 102 - 1402 West facing
Daisy A Block Unit 105 - 1405 West facing
Daisy A Block Unit 106 - 1406 East facing
Daisy B Block Unit 101 - 1401 East facing
Daisy B Block Unit 102 - 1402 West facing

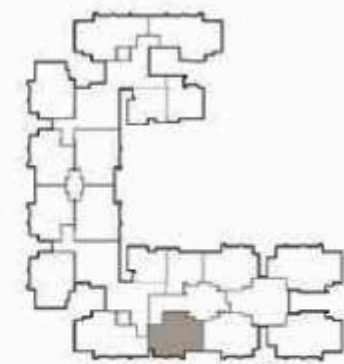
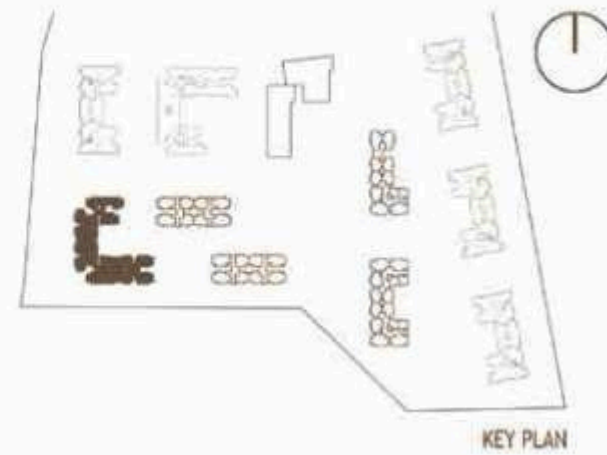


ELDERBERRY
2BHK-D
RERA CARPET AREA - 642.9 SQFT
SALEABLE AREA - 987.8 SQ FT

DAISY



Gardenia B Block Unit 105 - 1405 West facing

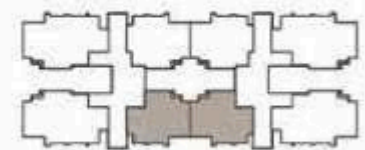
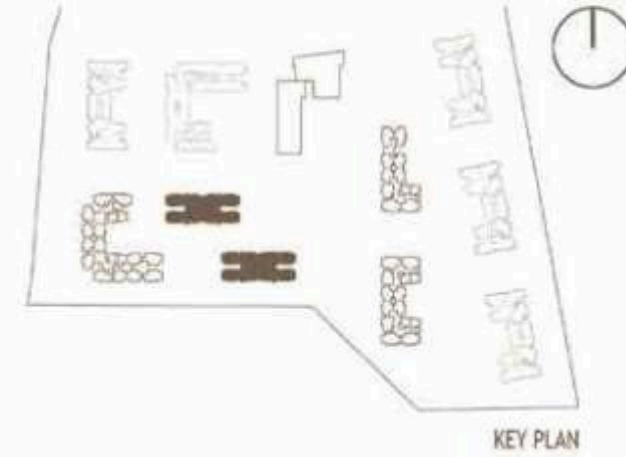


GARDENIA

2BHK-E
RERA CARPET AREA - 638.3 SQFT
SALEABLE AREA - 983.3 SQ FT



Hibiscus & Fuchsia A Block Unit 103 - 1403 North facing
Hibiscus & Fuchsia B Block Unit 104 - 1404 North facing

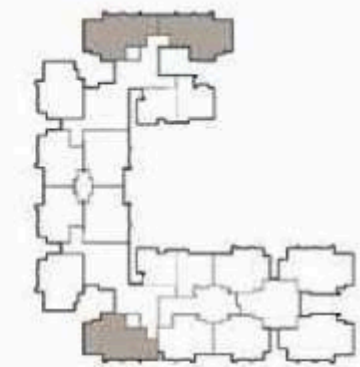
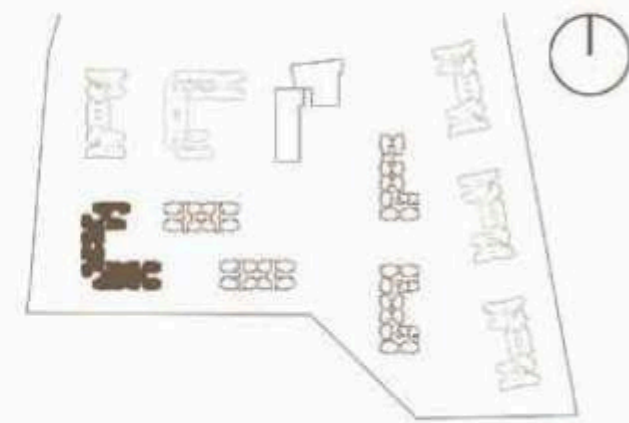


HIBISCUS & FUCHSIA

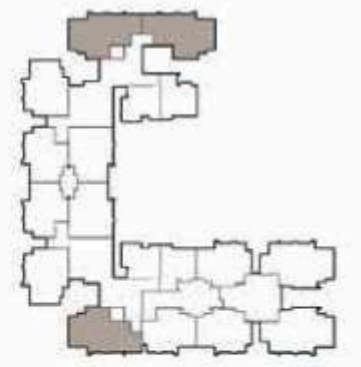
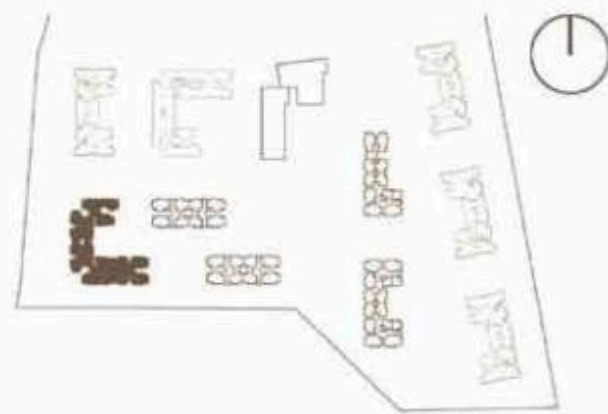
2BHK-B
RERA CARPET AREA - 648.9 QFT
SALEABLE AREA - 990.9 SQ FT







3BHK-2T-A
RERA CARPET AREA - 811.9 SQFT
SALEABLE AREA - 1240.8 SQ FT



3BHK-2T-A(A)
RERA CARPET AREA - 811.9 SQFT
SALEABLE AREA - 1282.5 SQ FT



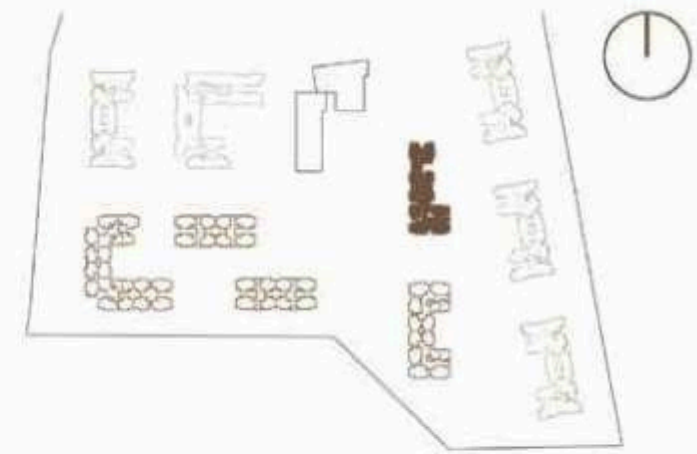
3BHK-3T-C
RERA CARPET AREA - 911.8 SQFT
SALEABLE AREA - 1359.7 SQ FT

Daisy A unit no- 101-1201 South Facing | Daisy A unit no- 102-1202 South Facing | Daisy B unit no- 106-1206 North Facing | Daisy B unit no- 105-1205 North Facing

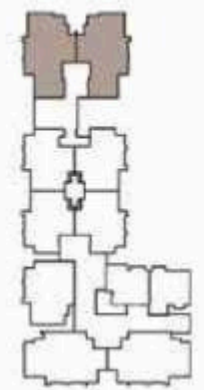
Elderberry B unit no- 106-1206 North Facing | Elderberry B unit no- 105-1205 North Facing



Elderberry A unit no- 1301-1401 East Facing
Elderberry A unit no- 1302-1402 West Facing



KEY PLAN

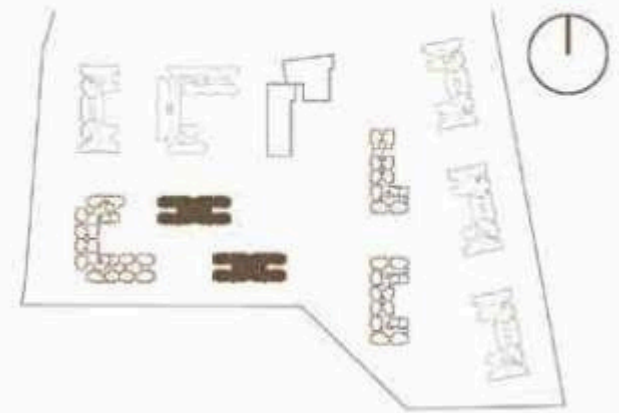


ELDERBERRY

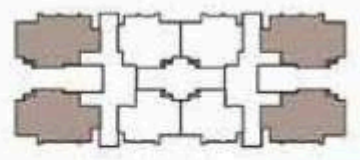
3BHK-2T-B(A)
RERA CARPET AREA - 830.9 SQFT
SALEABLE AREA - 1296.7 SQ FT



Hibiscus A & Fuchsia A unit no- 101-1201 East Facing | Hibiscus A & Fuchsia A unit no- 104-1204 East Facing
Hibiscus B & Fuchsia B unit no- 102-1202 West Facing | Hibiscus B & Fuchsia B unit no- 103-1203 West Facing



KEY PLAN

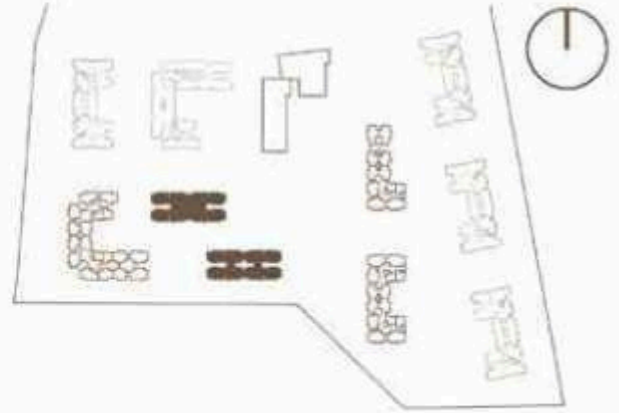


HIBISCUS & FUCHSIA

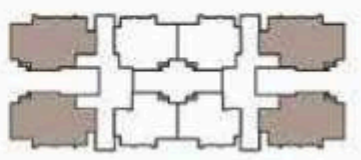
3BHK (3T)-A
 RERA CARPET AREA - 890.8 SQFT
 SALEABLE AREA - 1343.3 SQ FT



Hibiscus A & Fuchsia A unit no- 1301-1401 East Facing | Hibiscus A & Fuchsia A unit no- 1304-1404 East Facing
Hibiscus B & Fuchsia B unit no- 1302-1402 West Facing | Hibiscus B & Fuchsia B unit no- 1303-1403 West Facing



KEY PLAN



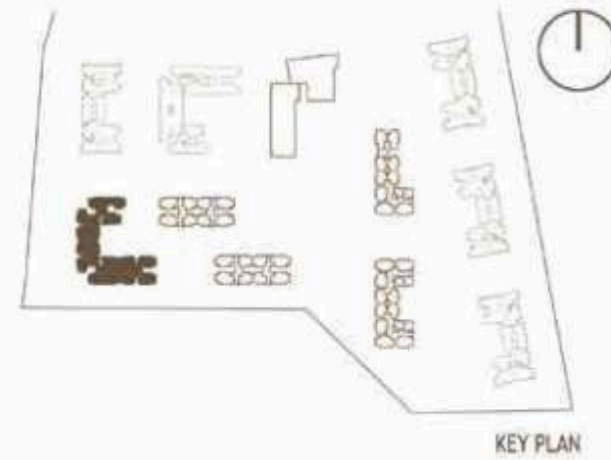
HIBISCUS & FUCHSIA

3BHK 3T-A(A)
 RERA CARPET AREA - 890.8 SQFT
 SALEABLE AREA - 1399.0 SQ FT

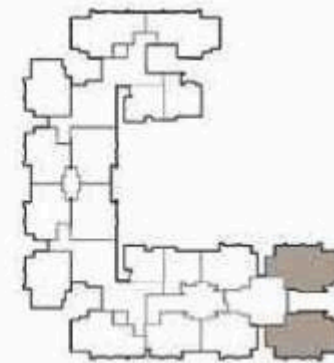


Gardenia C unit no- 102-1202 West Facing

Gardenia C unit no- 103-1203 West Facing



KEY PLAN



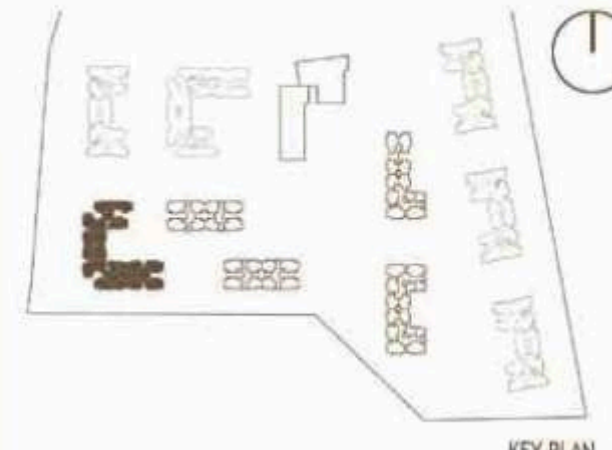
GARDENIA

3BHK-3T-B
RERA CARPET AREA - 875.5 SQFT
SALEABLE AREA - 1338.6 SQ FT

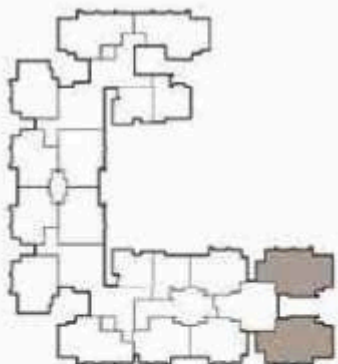


Gardenia C unit no- 1302-1402 West Facing

Gardenia C unit no- 1303-1403 West Facing



KEY PLAN



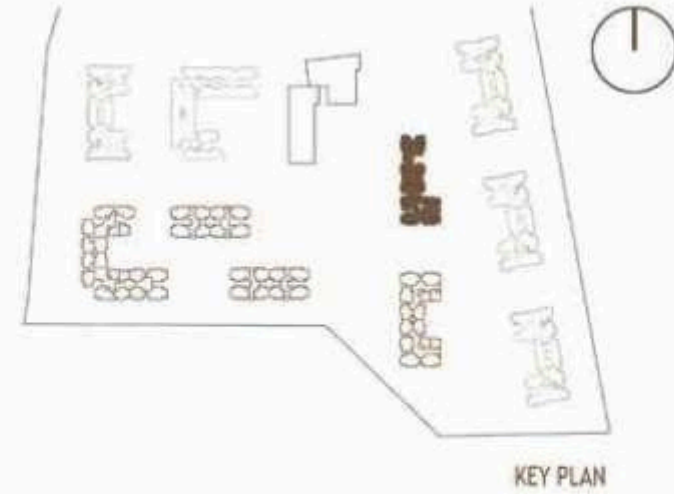
GARDENIA

3BHK-3T-B(A)
RERA CARPET AREA - 875.5 SQFT
SALEABLE AREA - 1392.5 SQ FT

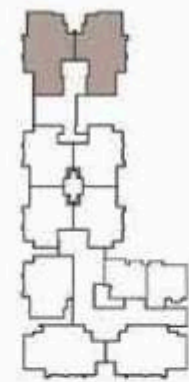


Elderberry A unit no- 101-1201 East Facing

Elderberry A unit no- 102-1202 West Facing



KEY PLAN



ELDERBERRY

3BHK-2T-B
RERA CARPET AREA - 830.9 SQFT
SALEABLE AREA - 1272.7 SQ FT



Artist's impression of Embassy Edge @ Embassy Springs



SMART
LIVING.
**SMARTER
HOMES.**